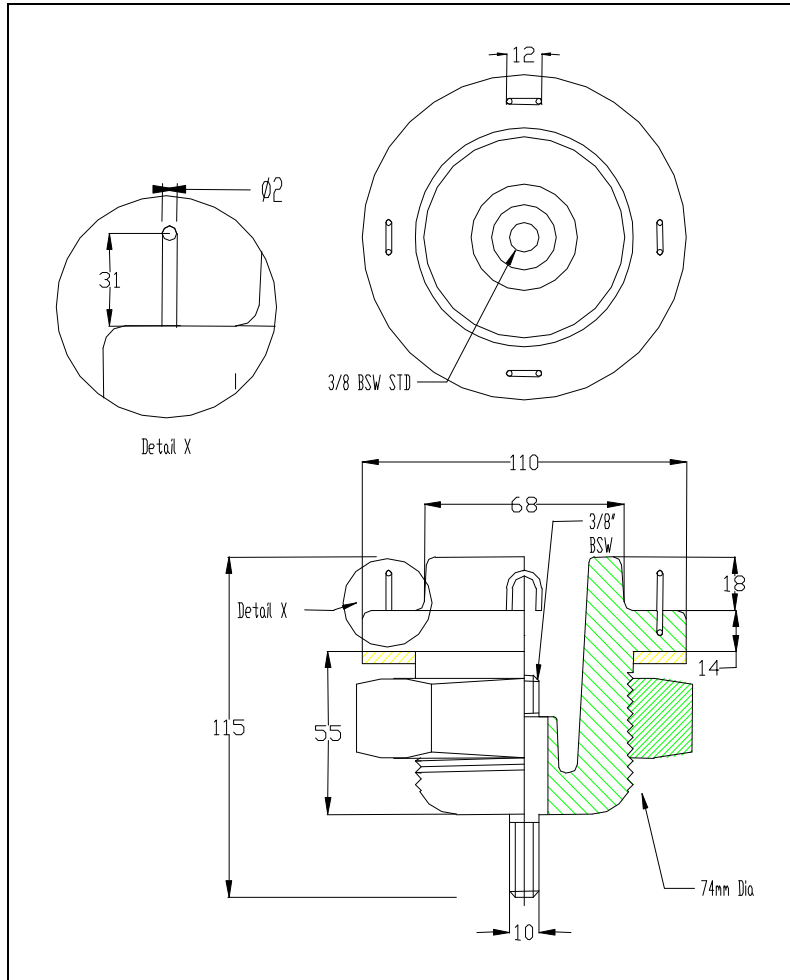




WELL BUSHING

WB 20/200

Up to 24kV – 200A



Application

For use in equipment insulated with oil or SF6 gas typically for transformers, switchgear or capacitors.

Design

Moulded PH-CEP* hydrophobic cycloaliphatic epoxy insulated part with an IEEE 386 taper. (to be used in conjunction with the appropriate 200A removable insert)

Standards

EMCP bushings meet the characteristics of AS2629, 1983 and relevant IEC standards.

Quality

Each bushing is put through stringent quality assurance in line with the EMC Pacific ISO9001 Quality Management System.

Manufactured in Australia by EMC Pacific Pty Ltd, Dandenong, Victoria.

Specification and product design are subject to change without notice. All Information is accurate at time of printing.

Specification

*Permanent Hydrophobic Cycloaliphatic Epoxy Resin (patent applied)

| | |
|--|-----------|
| Product No | WB 20/200 |
| Highest Voltage for Equipment (kV) | 12-24kV |
| Max Current Rating (A) | 200A |
| Impulse Withstand Voltage (kV) | 150 kV |
| Dry Power Frequency Withstand Voltage (kV) | 50 kV |